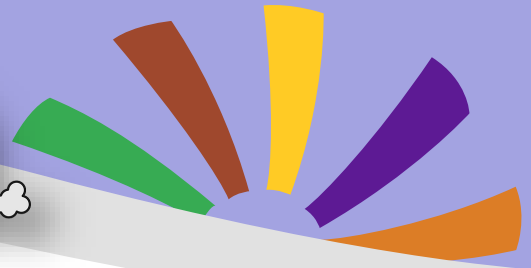




Parent Handout



School Bus Safety

In Ontario, more than 830,000 kids are bused to school each day. Province-wide, there are more than 20,000 school bus routes operating daily. As parents and guardians, there is much we can do to become active participants in school bus safety. Parents can promote school bus safety in the following ways:

- Ensure that the school and bus company have your current contact and caregiver information.
- Model and reinforce safe and appropriate behaviour to your children while waiting for and boarding the bus.
- Get to know your child's bus driver, bus company, route number and pick-up/drop-off times. Remember, bus drivers are only able to pick up and drop off students at authorized stops and cannot make stop changes.
- Parents/Guardians are responsible for their child's safety and conduct prior to boarding the bus. This includes walking or driving the child to and from the bus stop.
- Please ensure that you meet your child on the same side of the street where they board/exit the bus.
- Please ensure that your child is at the bus stop at least 5 minutes prior to scheduled bus arrival. This helps to ensure that students are prepared to board and can avoid rushing.
- If you are the parent of a Junior or Senior Kindergarten student, ensure that the Purple Band provided by the school is visible and securely attached to the top handle of your child's backpack. Please ensure as well that an authorized guardian is present to meet your child at the bus stop each and every time.
- As a parent driver, please ensure that you practice safe and mindful driving, respectfully sharing the road with bus traffic and avoiding stopping or parking in Bus Loading Zones if dropping or meeting your child at school.
- Report bus safety concerns to STEO with details including bus number, date, time and location of your concern. *
- Provide immediate notice to the school and bus company, if your child is not to be on the bus as expected.
- Plan for changeable weather and assist your child to dress in weather appropriate gear. This ensures a safer and more comfortable wait and ride.
- Complete a Life Threatening Emergency Medical Form if your child has a medical condition of which the school and bus company should be aware. Submit completed forms to the school.

